

Photo Corian® Quartz, all rights reserved.
图片相关版权归可丽耐® 石英石所有。
Printed representation of colors may vary from actual samples.
For details, please contact your local distributor or dealers.
印刷品的色调可能与实物有异, 请向各特许代理或分销商查询详情。

Copyright© 2018 DuPont. All rights reserved. DuPont™, the Corian® Design logo, Corian® Quartz and the Make Your Space™ tagline are registered trademarks or trademarks or copyrighted material of E. I. DuPont de Nemours and Company or its affiliates.

可丽耐® 石英石
Corian® Quartz





可丽耐® 石英石

回归当代生活 超越时间之美

石英石面材作为具有卓越性能的创新装饰面材，已被建筑装饰行业、建筑师和设计师高度认可，并得到广泛应用。

可丽耐® 石英石，由纯石英晶体制成，突破性材料所呈现的力量和美感，源自于高净度、高聚合度及不含重金属的特性。比起大多数天然石材的强度要高3至7倍，且耐刮擦，能有效减少短期及长期维护带来的烦扰。颜色花纹丰富精美，令视觉感受惊艳独特。质感如同天然石材，能进行精确地加工，又能与不锈钢、木材、玻璃等不同材质完美融合，令设计师们轻松自由地实现任何创意设想。

如今，可丽耐® 石英石被广泛应用于如酒店、餐饮、教育、零售、医疗、娱乐及办公等商业空间，全面涵盖如地面、墙面、工作台面、接待台、窗台、吧台、柜台及实验室桌面等众多应用类型。同时更为家居设计带来品味格调，包括厨房台面、墙面、地板、浴缸、沐浴房等室内空间，可丽耐® 石英石均能被高效应用并完美呈现。

Corian® Quartz

Timeless Beauty for Contemporary Living

Corian® Quartz is an innovative, high performance, decorative surfacing material available to industry, architects and designers. Corian® Quartz made with pure quartz crystals. The secret behind this groundbreaking material's strength and beauty lies in high-purity quartz, a binding polymer and heavy metal-free pigments. Comparing to other materials, It is three to seven times stronger than most natural stone surfaces. It is extremely hard minerals that resist scratches and minimize short and long-term maintenance. They are visually striking — and utterly unique. The versatile character of Corian® Quartz allows it to make a bold individual statement or to blend harmoniously with other materials such as stainless steel, wood or glass. Allowing designers the freedom to fulfil their visions. Corian® Quartz can be used in a variety of commercial environment including hotel and leisure, food service, education, retail, healthcare, entertainment and corporate spaces. Applications include flooring, wall cladding, work surfaces, reception counters, windowsills, bar tops, vanity tops, wet areas, tabletops, sales counters and lab tables. Corian® Quartz is equally effective in residential environment, whether contemporary or classic in style.

主要特性

经久耐用

可丽耐®石英石具有出色的强度和耐久性。在日常使用中能抵御大多数的冲击、雕刻和切割。同时通过了多项面材理化性能的测试。

均质

可丽耐®石英石的结构和纹理一致，颜色和花纹贯穿整个材料厚度，不会在磨损后消失。

无孔及耐污性

可丽耐®石英石是一种无孔且具有出色耐污性的材料。在适当清洁后，表面不会滋生任何的霉菌及细菌。

无毒且不会引起过敏

可丽耐®石英石对人体无毒且不会引起过敏。经第三方权威机构测试不含重金属成分，并且符合关于有害物质

限定的EU 2002/95EC标准要求。同时可丽耐®石英石也通过了NSF/ANSI 51最高级的食品接触级认证，适用于所有食品及使用环境。

免维护

与其他材料相比，可丽耐®石英石更易于维护，无需对表面进行密封处理、抛光及打蜡等处理来维持其亮丽的表面。

环保

所有可丽耐®石英石均获得了美国绿色卫士室内空气质量的认证，同时也获得绿色卫士儿童&学校级的认证。可丽耐®石英石也可以帮助建筑在由美国绿色建筑委员会创立的LEED®认证中材料再使用及环境质量这一评分项中获得更多的分数。

Key Characteristics

Durable

Corian® Quartz stands out for its superior strength and durability. It resists most impacts, nicks and cuts that occur in daily wear and tear. Corian® Quartz has been tested for its mechanical, thermal, electrical and other surface properties.

Homogeneous

Corian® Quartz offers consistency of structure and aesthetics. Colors and patterns run all the way through the material and can not wear off.

Nonporous and stain resistant

Corian® Quartz is a nonporous surface and resists stains. When properly cleaned, these surfaces do not support the growth of mold, mildew and bacteria.

Non-toxic and non-allergenic

Corian® Quartz is inert non-toxic and non-allergenic to humans.

The material is third-party certified to be free of heavy metals and complies with the EU Directive 2002/95EC on the Restriction of Hazardous Substances(RoHS). And Corian® Quartz are also NSF/ANSI 51 certified to the highest level for food contact for all food types.

Carefree

Unlike other materials, you never have to seal, polish or recondition the surface to maintain its luster.

Environmentally Friendly

All Corian® Quartz colors are GREENGUARD Indoor Air Quality Certified® and GREENGUARD for Children & Schools SM Certified®. Corian® Quartz may contribute to U.S. Green Building Council LEED® points in the Material Reuse (MR) and Environmental Quality (EQ) categories.

可丽耐® 石英石技术参数表

物理性质

性能	测试依据	测试结果
密度	ASTM D792	2.4 g/cm³
厚度		2 cm 和 3 cm
重量		49(2cm) kg/m²; 74(3cm) kg/m²
热膨胀性	ASTM D696	1.45 × 10 ⁻⁵ m/m℃
硬度	莫氏硬度	7

机械性能

性能	测试依据	测试结果
抗弯强度	ASTM D790	> 5300 psi
弯曲模量	ASTM D790	5.3–5.7 × 10 ⁶ psi
弯曲伸长率	ASTM D790	> 0.1%
抗压强度（干）	ASTM C170	27300 psi
抗压强度（湿）	ASTM C170	24400 psi

使用性

性能	测试依据	测试结果
光泽度	ANSI Z124	45–50
色牢度	NEMA LD 3–3.3	无影响
落球冲击	NEMA LD 3–3.8	164 in（此高度无损坏）
耐久和清洁性	CSA B45.5–11/IAPMO Z124–2011	通过
耐污性	CSA B45.5–11/IAPMO Z124–2011	通过
抗真菌	ASTM G21	ASTM 分级为0，放大100倍下观察无增长
抗细菌	ASTM G22	放大100倍下观察无增长
抗微生物	UL Environmen, UL 2824 (ASTM D6329)	对霉菌增长有极高抵抗性
耐沸水性	NEMA LD 3–3.5	无影响至轻微影响
耐高温性	NEMA LD 3–3.6	无影响至轻微影响
冻融测试	ASTM C1026	无影响
点撞击测试	ANSI Z124.6.4.2.1	通过
摩擦系数	ASTM C1028	0.89/0.61（干/湿）
耐磨性	ASTM C501	139
吸水性	ASTM C373	0.0012
长度偏差	ASTM D570	< 0.04%
吸湿膨胀	ASTM C370	< 0.01%平均
易燃性	NFPA 100®, Life Safety Code®	A级
火焰传播指数（FSI）	ASTM E84, NFPA 255 & UL 723	FSI=0（3cm），FSI=5（2cm）
产烟指数（SDI）	ASTM E84, NFPA 255 & UL 723	SDI=40（3cm），SDI=75（2cm）
火焰传播量（FSV）	CAN/ULC–S102	FSV=0（3cm），FSV=5（2cm）
产烟量	CAN/ULC–S102	SDV=10（3cm），SDV=40（2cm）

Corian Quartz® Physical Properties

Physical Properties

Property	Test	Typical Result
Density	ASTM D792	2.4 g/cm³
Nominal Thickness		2 cm and 3 cm
Approximate weight per square foot (2cm)		10 lbs.
Approximate weight per square foot (3cm)		15 lbs.
Thermal Expansion	ASTM D696	1.45×10 ⁻⁵ m/m℃
Hardness	Mohs Hardness Scale	7

Mechanical Properties

Property	Test	Typical Result
Flexural Strength	ASTM D790	> 5300 psi
Flexural Modulus	ASTM D790	5.3-5.7×10 ⁶ psi
Flexural Elongation	ASTM D790	> 0.1%
Compression Strength (Dry)	ASTM C170	27300 psi
Compression Strength (Wet)	ASTM C170	24400 psi

Fitness For Use

Property	Test	Typical Result
Gloss	ANSI Z124	45-50
Colorfastness	NEMA LD 3-3.3	No Effect
Ball Impact Resistance: Slabs No Fracture-½ lb. ball-2&3 cm	NEMA LD 3-3.8	164 in (No failure at height)
Wear and Cleanability	CSA B45.5-11/IAPMO Z124-2011	Passes
Stain Resistance	CSA B45.5-11/IAPMO Z124-2011	Passes
Fungal Resistance	ASTM G21	ASTM Rating of 0, No observed growth on product at 100x power
Bacterial Resistance	ASTM G22	No observed growth on product at 100x power
Microbial Resistance	UL Environmen, UL 2824 (ASTM D6329)	Highly Resistant to Mold Growth
Boiling Water Resistance	NEMA LD 3-3.5	None to slight effect
High Temperature Resistance	NEMA LD 3-3.6	None to slight effect
Freeze-Thaw Cycling	ASTM C1026	Unaffected
Point Impact	ANSI Z124.6.4.2.1	Passes
Static Coefficient of Frictio (as received)	ASTM C1028	0.89/0.61 (Dry/Wet)
Abrasion Resistance	ASTM C501	139
Water Absorption	ASTM C373	0.12%
Long and Short term	ASTM D570	< 0.04%
Moisture Expansion	ASTM C370	< 0.01% average
Flammability	NFPA 101®, Life Safety Code®	Class A
Flame Spread Index (FSI)	ASTM E84, NFPA 255 & UL 723	FSI=0 (3cm), FSI=5 (2cm)
Smoke Developed Index (SDI)	ASTM E84, NFPA 255 & UL 723	SDI=40 (3cm), SDI=75 (2cm)
Flame Spread Value (FSV)	CAN/ULC-S102	FSV=0 (3cm), FSV=5 (2cm)
Smoke Developed Value (SDV)	CAN/ULC-S102	SDV=10 (3cm), SDV=40 (2cm)



目录

可丽耐®石英石

主要特性

技术参数表

色彩检索

古董珍珠

景泰蓝

鱼肚白

麦冬

云晶白

古典米黄

卡拉拉

象牙黄

椒麻灰

卡拉灰

鹅黄

黑晶砂

黑水晶

伦敦雾

雅仕黑

雪野

卡拉黑

纸纱黄

珠光石

马鞍棕

鼠尾草

闪晶灰

水墨白

焦麻

太妃

可丽耐®石英石色谱

可丽耐®石英石维护指南

Index

Corian® Quartz 1

Key Characteristics 3

Physical Properties 5

Color Index

Antique Pearl 8

Blue Carrara 10

Calacatta Natura 12

Caraway 14

Cloud White 16

Coarse Botticino 18

Coarse Carrara 20

Coarse Marfil 22

Coarse Pepper 24

Concrete Carrara 26

Cygnus Pearl 28

Galaxy Black 30

Grigione 32

London Sky 34

Mystic Black 36

Neve 38

Onyx Carrara 40

Papyrus 42

Pearl Stone 44

Saddle Brown 46

Sage 48

Storm Grey 50

Stratus White 52

Toasted Almond 54

Toffee 56

Corian® Quartz Colors 58

Caring for Corian® Quartz 60



如同遗落于海边的贝壳，沉睡数个世纪，让自然之色赋予空间一派宁静祥和之感。



Antique Pearl is a light, warm taupe with monochromatic tone-on-tone texture highlighted by reflective particles. It is deeper and more yellow than Antique Pearl.



宛若中国青花瓷的典雅纹理，蓝色深浅不一，随意自然，是隐藏在静谧空间里的进退伏笔，烘托出别具一格的隽永格调。



Like the elegant texture of Chinese blue and white porcelain, the blue veinings hide in the quiet space and provide a unique impression.



源于灰色鱼肚白实材质感，沉静之中自带内敛格调，肌理脉络细腻丰富，应用于背景墙及陈列展示区，全然满足高端时尚宅邸关于奢贵的定义与想象。



Enriched by the evocative veined design found in the muted gray Calacatta Natura, the wall and display stand provide a much-needed touch of luxe to a high-end fashion boutique.



浅黄的杏仁色，糅合着肉桂与黄姜的点点斑纹，如纯粹自然之风拂面而来，夹杂着微微植物香气，沁人心脾。



Caraway has almond combined with waves of cinnamon and ginger root flecks.



纯米白色上规则地散落半透明斑点，
不经意之间，教人迷醉于如此深度
美学空间。



*It is a pure white base with uniform translucent particles
that create depth.*



精致典雅的暗黑色纹理，仿若游走在被象牙色笼罩着的意大利古典旧城中，饱含沉静力量，呈现超越时间的美感。



It is a trip to Italy for inspiration in pale ivory that is fine-spun with darker veining. This pattern offers quiet strength and timeless appeal.

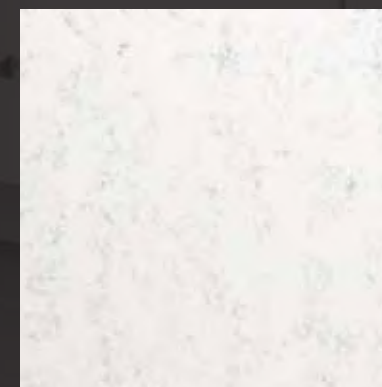
Coarse Carrara

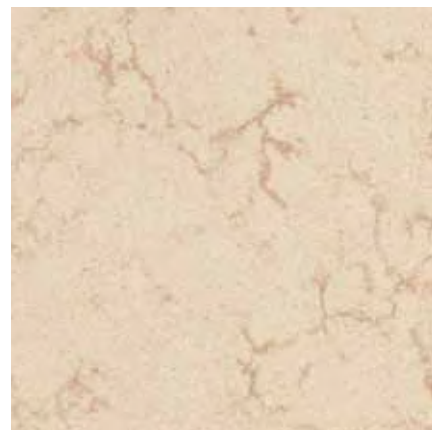
卡拉拉



犹如在霜冻时节，飘落于霜雪之上的细絮，映照出深入纹理的内在美感。

It features frosted grays which transcend into bright white color with beautiful scattered veining.





色彩如在有机叶脉的纹理上，撒了些许咖啡粉末，又轻轻抹上几分淡奶油，自然又迷人。



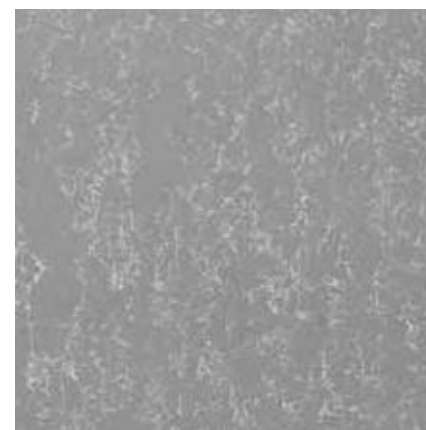
Coarse Marfil features organic effect veining, amalgamated with light cream and coffee tones.



胡椒的灰，海盐的白，融合在暖暖的灰调里，更衬托出那散落其中的灰黑颗粒，一派暖意。

It is a spicy mix of pepper and salt, with white veining cutting through warm grays and reflective black flecks.





来自后工业时代的峻冷格调，白色细纹游走其中，创造单纯素净的视觉感受，用以沉淀忙碌奔波之后的心境。

It is the post-industrial style of grey with light white veining that create a simple visual perception of the pure mind.



浅米白色上均匀排布着半透明斑点，
相似色调相互映衬，更显温柔恬静。

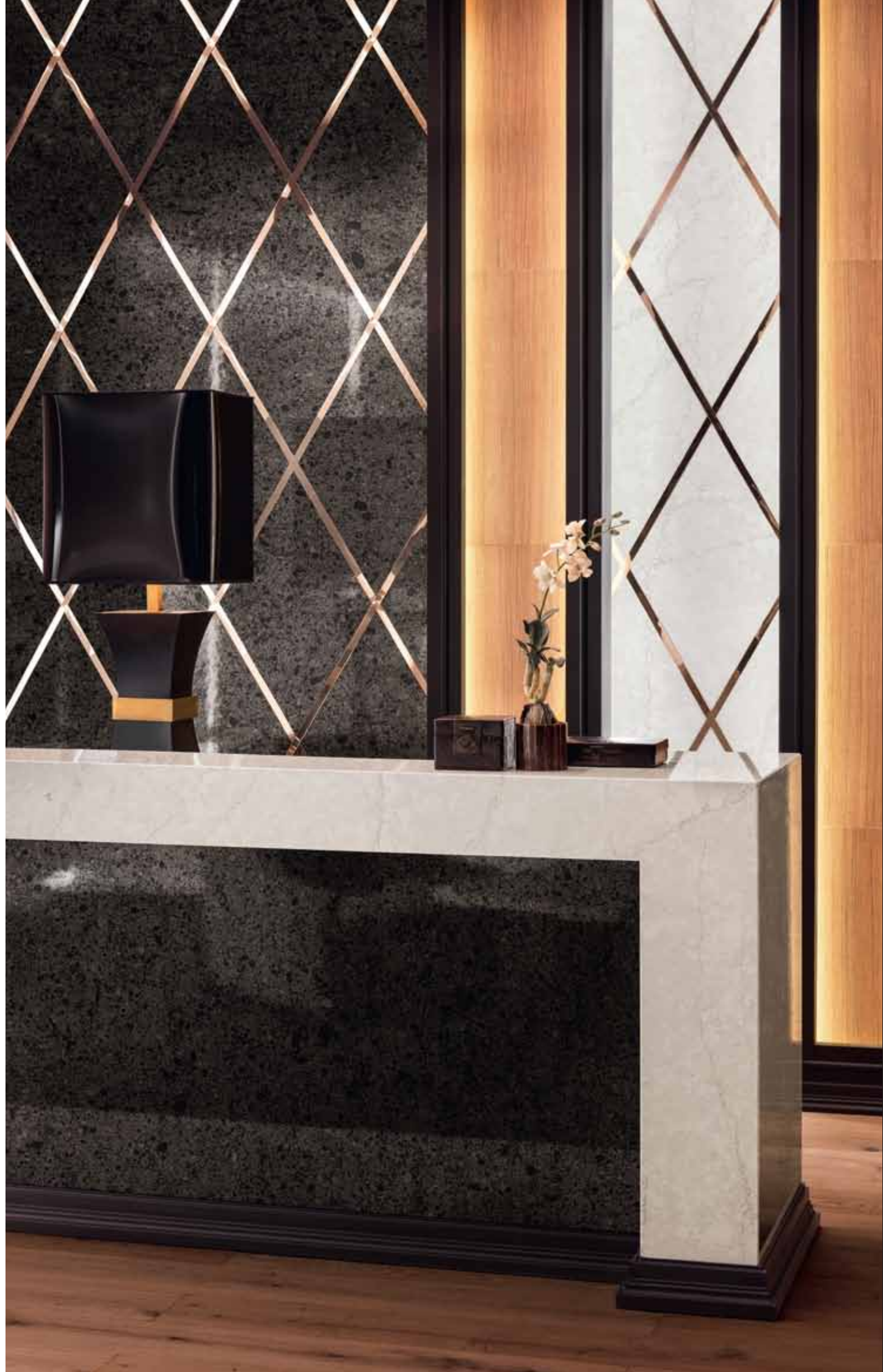
*It is a monochromatic creamy light beige base (warm
yellow tone) with uniform translucent and tone-on-tone
particles that create depth.*



犹如黑色深邃的夜空中，不时地闪耀出晶莹的星星点点，教人倍感平和静谧。



It has an achromatic black base with large milky-white particles highlighted by reflective shimmer.



黑色斑点镶嵌在浅灰色整体空间之中，如黑水晶坚硬而深邃，赋予五星级酒店接待区奢贵质感。

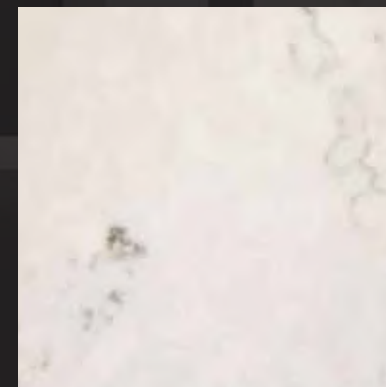


Marked by pitch-dark specks set on a grayish field, the opulent Grigione pattern brings a sense of solidity and depth to a lavish reception area at a five-star hotel.



如伦敦迷雾，浅黄色上犹如蒙上层层雾霭，与壁橱上黑色的木饰面相互对比映衬，给予城市居宅的厨房装饰空间谜样高贵风格，耐人寻味。

The cloudy beige London Sky motif on the countertop and backsplash elegantly contrasts with cabinets in a dark wood veneer to create a sophisticated kitchen décor in an urban townhouse.

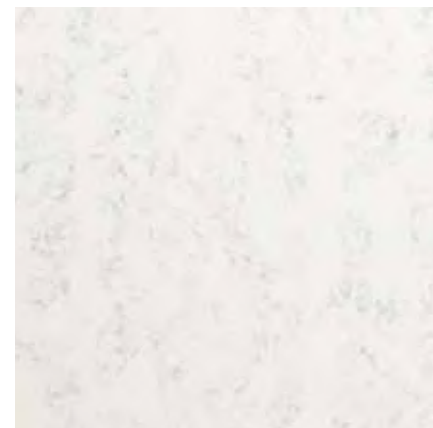




纯粹的黑色基调上点缀着半透明的颗粒，呈现沉稳睿智的雅仕风格。



Mystic Black is a monochromatic solid black with depth created by small translucent particles with a reflective shimmer.

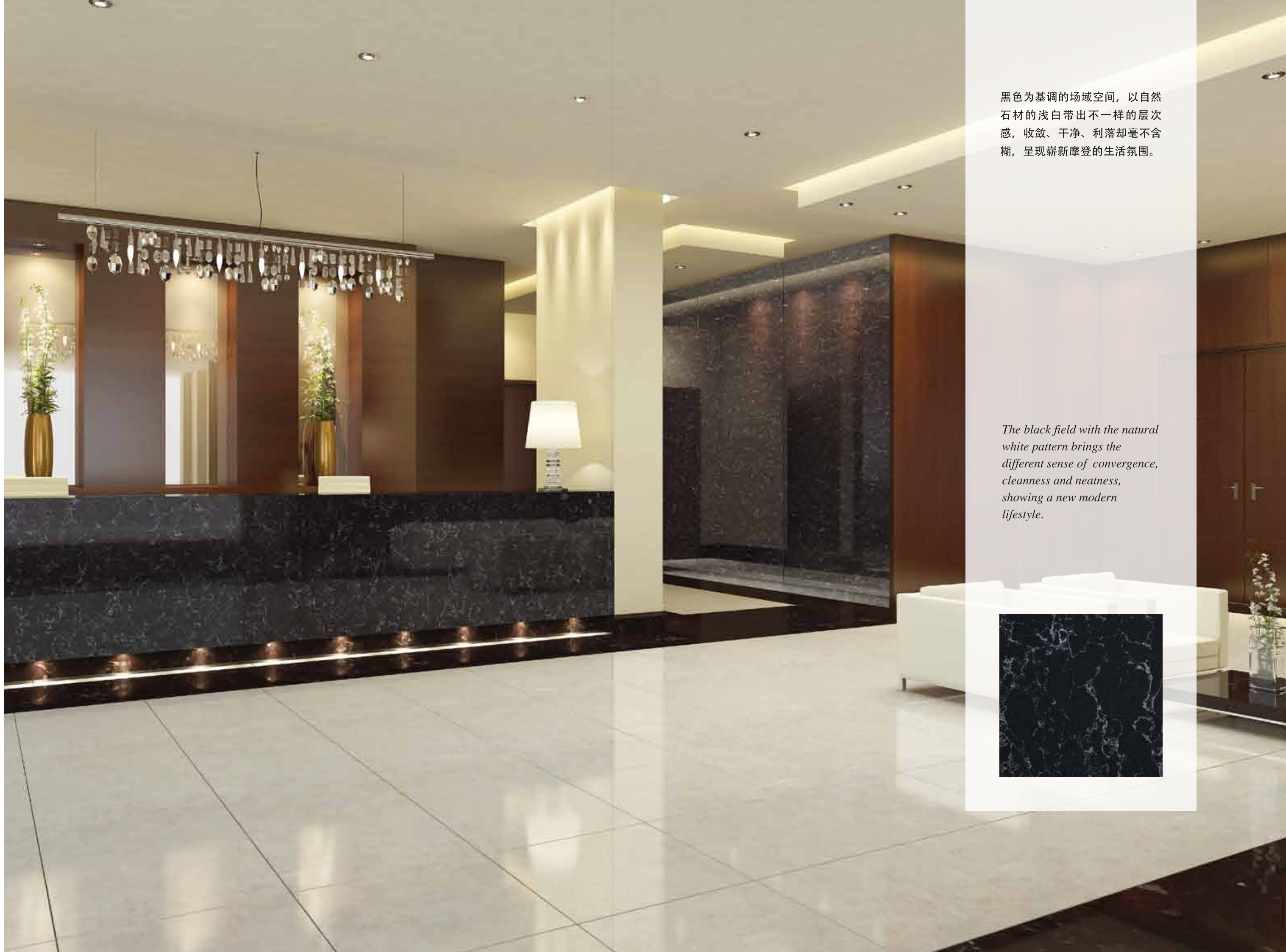


带上你的装备，是时候去野一下，登顶新高度！以雪野实材设计的主题空间，纯白色彩蕴含微微细纹，更进一步强化自然冷峻的视觉观感，让人仿若身临茫茫雪域奇峰，而镶嵌其中的灰黑细点，与光线相互协调糅合，中和了空间的冰冷感。



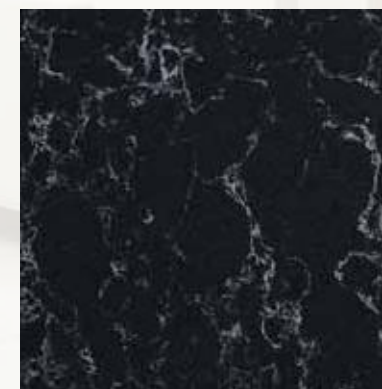
Grab your climbing gear; it's time to satisfy your wanderlust! Scale new heights and reach new peaks with Névé, an exquisite alpine glacier color that holds crisp white with subtle striations.

It has strength and power and can offer a cooling visual element to a design scheme. Enhanced with small markings in grey and black, it coordinates well with dark as well as light neutrals, and its cooling natural balances any interior.



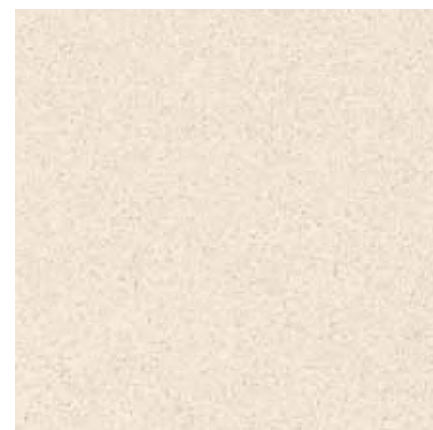
黑色为基调的场域空间，以自然石材的浅白带出不一样的层次感，收敛、干净、利落却毫不含糊，呈现崭新摩登的生活氛围。

The black field with the natural white pattern brings the different sense of convergence, cleanness and neatness, showing a new modern lifestyle.



Papyrus

纸沙黄



如海边白沙般的微粒，细致分布其中，也不禁让人联想到撒满芝士粒的意式浓汤。



Papyrus is a finely-grained, near-white sandy tone that coordinates with bisque fixtures.



棕色的自然纹理与斑点，深深浅浅，
漫布于米黄色的岩石上，宛如回归
山野田园的居住氛围。



*It is a beige Limestone from nature world with darker
brown veining and particles that create an idyllic living
atmosphere.*



暖黄铜色的材质上糅合棕色斑点，
如同夕阳下的秋日牧场，温暖而富
有深意。

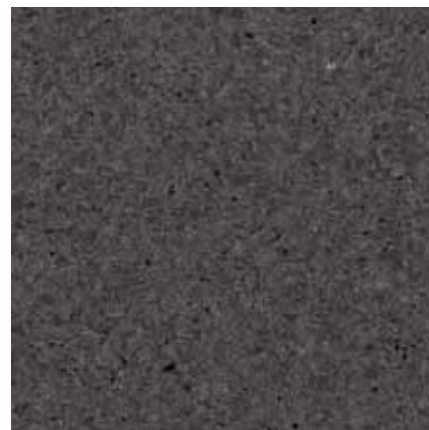
*It is a melange of warm copper and contrasting brown
particles.*



如同深色的迷迭香，混杂着茴香与香草豆的碎颗粒，呈现复杂而又引人入胜的氛围基调。

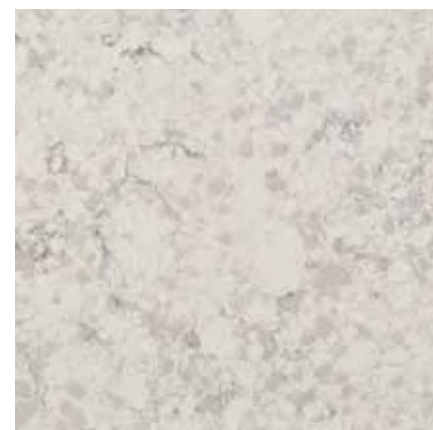


It is browned rosemary sprinkled with a complex mix of anise and vanilla bean flecks.



如若深灰色的岩石之中，镶嵌着深黑色的斑点，展现自然世界之中的沧桑美感。

It is a deep slate, textured with lighter and darker particles.



浮于空中的白色泡沫，缓缓飘落，
与白色大地轻柔相触，丰盈饱满的
质感却不失其轻柔飘逸。



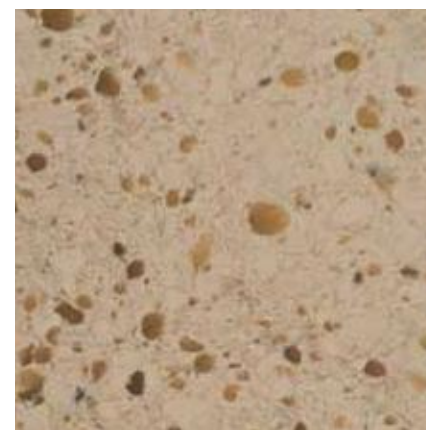
*Stratus White, ethereal and frothy, the white ground comes
with quiet touches of gray and pale beige that give it
richness without losing its feature-like quality of lightness.*



硕大的半透明石英石，色泽如焦糖般，不规则地散落着黑色的小斑点，展现自然界的天然美感。



It has a rich, creamy and golden mixes base with large translucent quartz and light brown particles, accented with loosely scattered small black particles.



如同太妃糖的色调，乳白色中裹着焦糖色的颗粒，有点甜，有点脆，却暖在心，教人回味无穷。

It is sugared, crisp and warm. The caramel flecks in a pale ground make for a mouth-watering combination that is at once familiar and exotic.

可丽耐®石英石色谱 Corian® Quartz Colors

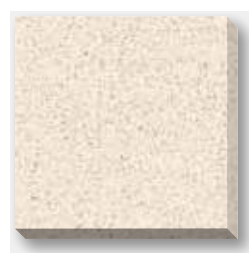
臻石系列 DELIGHT COLLECTION



云晶白
Cloud White



鹅黄
Cygnus Pearl



纸纱黄
Papyrus



黑晶砂
Galaxy Black

臻品系列 BOUTIQUE COLLECTION



古董珍珠
Antique Pearl



麦冬
Caraway



焦麻
Toasted Almond



景泰蓝
Blue Carrara



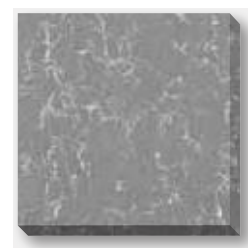
古典米黄
Coarse Botticino



卡拉拉
Coarse Carrara



象牙黄
Coarse Marfil



卡拉灰
Concrete Carrara

尊享系列 LUXURY COLLECTION



椒麻灰
Coarse Pepper



雅仕黑
Mystic Black



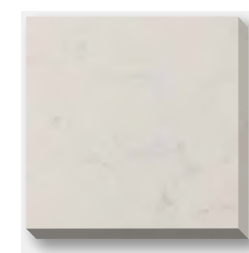
马鞍棕
Saddle Brown



卡拉黑
Onyx Carrara



鼠尾草
Sage



伦敦雾 [New]
London Sky



雪野 [New]
Neve



珠光石 [New]
Pearl Stone

尊尚系列 PREMIUM COLLECTION



水墨白
Stratus White



太妃
Toffee



闪晶灰
Storm Grey



黑水晶 [New]
Grigione



鱼肚白 [New]
Calacatta Natura

可丽耐®石英石维护指南 Caring for Corian® Quartz



保养维护简便

由于材料本身有着出色的耐污性，您无需花费太多时间去关注其清洁维护。可丽耐®石英石是一种坚硬、无孔、耐化学品性出色、高性能的面材，为您的家居厨房增添自然的美感。

常规清洁

只需使用清水和抹布

一些简单的维护就能使可丽耐®石英石长久地维持其美观亮丽的表面。日常清洁时，只需使用湿抹布或毛巾擦拭其表面即可。如果需要，可以使用少量的非氯漂白、非研磨性的清洁剂。

及时清理溢出物—在其凝固前

即使可丽耐®石英石能抵御液态污渍（比如红酒、醋、茶、柠檬汁及苏打水）或果蔬的侵蚀，但还是建议在有溢出物时应及时清理干净。

对于那些顽固或已凝固的溢出物，使用类似于3M百洁布的非研磨性的清洁垫，配合Formula 409®玻璃和面材清洁剂或类似的清洁产品。

必备工具

砧板及炉架

可丽耐®石英石耐高温且耐刮擦，而不是防高温及防刮擦。正确的习惯建议使用炉架来放置高温锅，使用砧板来切食物，不建议直接在台面上进行切削。

QUARTZ FOR EASY CARE AND MAINTENANCE

Learning how to clean Corian® Quartz countertops takes no time at all—thanks to the stain-resistance of this remarkable material. Corian® Quartz is a tough, non-porous, chemically resistant, high-performance surface that elevates residential kitchen aesthetics with the natural beauty of quartz.

ROUTINE CARE

Just Use Water and a Paper Towel

With simple care, Corian® Quartz surface will retain its radiant, lustrous appearance for many years. For routine cleaning, simply wipe down your countertop with a damp cloth or paper towel and, if necessary, a small amount of non-bleach, non-abrasive cleanser.

Clean Up Spills Right Away—Before They Can Dry

Even though Corian® Quartz resists permanent staining when exposed to liquids (such as wine, vinegar, tea, lemon juice and soda) or fruits and vegetables, you'll want to wipe up food and liquid spills as soon as possible.

For stubborn or dried spills, use a nonabrasive cleaning pad such as a white 3M Scotch-Brite® scrub pad coupled with Formula 409® Glass & Surface Cleaner or a comparable cleaning product.

ESSENTIAL GEAR

Cutting Boards and Trivets

Corian® Quartz surfaces are heat- and scratch-resistant, but not heat- and scratch-proof. Use trivets or pads with hot pots, and always use a cutting board. Never chop or slice food directly on your countertops.



可丽耐® 石英石维护指南

Caring for Corian® Quartz

不应该使用什么

如果任何以下提到的物质接触到了可丽耐® 石英石表面，应立即用清水擦洗干净

无需打蜡或亮光剂

因为可丽耐® 石英石是无孔的表面，它能很好地维持其光亮的表面而无需使用任何密封剂或蜡。玻璃和面材清洁剂或类似的清洁产品。

请不要使用漂白剂

避免使用任何有漂白成分的清洁剂。在使用任何清洁产品时，请根据其使用说明和方法操作。

请不要使用高PH值的清洁剂

在接触一些常规的碱性物质时不会对可丽耐® 石英石产生任何损害，比如稀释过的漂白水。但高碱性的清洁剂是不建议使用的，比如炉灶清洗剂及漂白剂原液。

去除烹饪油脂

当遇到烹饪油脂难以去除的问题，使用 Greased Lightning™ 或类似的去油产品来去除表面的油脂。请根据清洁剂生产厂商的使用说明来使用。

永久性马克笔

将那些会留下永久性印记的马克笔和墨水远离您的台面。如果接触到了台面，首先应该根据日常清洁的方式进行清洁。如果污渍仍然存在，用 Goo Gone® 或类似的产品湿润抹布来擦拭污渍。最后使用温水擦拭任何残余的清洁剂。

将溶剂及其它强力化学品远离橱柜

避免将强力化学品及溶剂接触可丽耐® 石英石表面，特别是含有三氯乙烷或二氯甲烷的脱漆剂或起蜡水。同时也要将卸甲油、漂白剂、永久性马克笔或墨水和精油皂远离可丽耐® 石英石台面。

预防高温损害

为了维持可丽耐® 石英石其亮丽美观的表面，请不要将高温平底锅或烤盘直接放置在表面。杜邦建议使用炉架及隔热垫。

处理其他难清理的溢出物及物质

物质随着其变干也会变硬（比如口香糖、食物、油、卸甲油或漆），同时也会变得难以清理。可以使用塑料小刀轻轻地铲除这些顽固污渍。

提供10年有限质量保证

如果您在使用过程，发生由于产品缺陷而产生的使用问题，您可以放心，杜邦为可丽耐® 石英石产品提供10年有限质保。

WHAT NOT TO USE

If any of the substances mentioned below come into contact with Corian® Quartz, rinse the exposed surface immediately and thoroughly with water.

No Wax or Polish Necessary

Because it is non-porous, Corian® Quartz does not require sealants or waxes. Corian® Quartz keeps its lustrous gloss and ultra-smooth surface without polishing or applying sealant.

Do Not Use Bleach

Avoid using cleaners that contain bleach. Always follow the cleaner manufacturer's use instructions and exercise proper care when handling and storing any cleaning products.

Avoid High-pH Cleaners

Casual exposure to alkaline solutions, such as diluted bleach, will not damage Corian® Quartz. Highly alkaline (high pH) cleaners, such as oven cleaners and concentrated bleach, are not recommended.

Removing Cooking Grease

When grease from cooking is an issue, use Greased Lightning™, or a comparable degreasing product, to help loosen and remove the grease from the surface. Follow the cleaner manufacturer's instructions for use.

Permanent Markers

Keep permanent markers and inks away from your countertops. Should these agents come into contact with the surface, clean first as outlined above in Routine Care. If the stain persists, moisten a cloth with Goo Gone®, or a comparable product, and rub it into the stain. Rinse thoroughly with warm water to remove any cleaner residue.



Keep Solvents and Powerful Chemicals Off the Counter

Avoid exposing Corian® Quartz to strong chemicals and solvents, especially paint removers or furniture strippers containing trichlorethane or methylene chloride. Keep nail polish remover, bleach, bluing, permanent markers or inks, and oil soaps away from your Corian® Quartz countertops.

Heat Damage Prevention

To maintain the beauty of Corian® Quartz, do not place hot skillets or roasting pans directly onto the surface. DuPont recommends the use of trivets and hot pads.

Dealing with More Difficult Spills and Materials

Materials that harden as they dry (such as gum, food, grease, nail polish or paint) are especially tenacious. Remove these by gently scraping away the excess with a plastic putty knife.

Year Limited Residential Warranty

In the unlikely event that you do experience any problems due to a manufacturer's defect, you can rest assured that DuPont backs its Corian® Quartz brand quartz surface with a ten-year limited residential warranty.



金牌 Medallion



质保卡 Warranty Card

杜邦中国集团有限公司
上海分公司
中国上海浦东新区张江高科技园区
蔡伦路 600 号
邮编: 201203
电话: +8621 3862 2888

杜邦中国集团有限公司
成都分公司
中国四川省成都市人民南路
二段 1 号仁恒置地广场 15 层
1502 单元
电话: +8628 6511 1888
传真: +8628 6511 0585

DuPont China Holding Co., Ltd.
Shanghai Branch

600 Cailun Road, Zhangjiang
Hi-Tech Park, Pudong New District,
Shanghai 201203, China
Tel: +8621 3862 2888

DuPont China Holding Co., Ltd.
Chengdu Branch

Unit 1502, 15/F, Yanlord Landmark
Office Tower, No.1 Section 2, Renmin
South Road, Chengdu, 610000, China
Tel: +8628 6511 1888
Fax: +8628 6511 0585

杜邦中国集团有限公司
北京分公司
中国北京市朝阳区建国路 91 号
金地中心 A 座 18 层
邮编: 100022
电话: +8610 8557 1000
传真: +8610 8557 1888

杜邦中国有限公司
香港尖沙咀
广东道 9 号
港威大厦第 6 座 26 楼
电话: +852 2734 5345
传真: +852 2721 9897

DuPont China Holding Co., Ltd.
Beijing Branch

18F, Gemdale Plaza A
No. 91 Jianguo Road
Beijing 100022, China
Tel: +8610 8557 1000
Fax: +8610 8557 1888

DuPont China Limited

26/F, Tower 6, The Gateway 9
Canton Road, Tsimshatsui
Kowloon, Hong Kong
Tel: +852 2734 5345
Fax: +852 2721 9897

杜邦中国集团有限公司
广州分公司
中国广东省广州市天河路 208 号
粤海天河城大厦 4003B-4007A
邮编: 510620
电话: +8620 3669 8888
传真: +8620 3669 0368

杜邦台湾股份有限公司
台湾台北市松山区
敦化北路 167 号
宏国大厦 13 楼
电话: +886 2 2719 1999
传真: +886 2 2712 0444

DuPont China Holding Co., Ltd.
Guangzhou Branch

4003B-4007A Teemtower, Teemmall,
208 Tianhe Road, Tianhe District,
Guangzhou, PR China
Tel: +8620 3669 8888
Fax: +8620 3669 0368

DuPont Taiwan Limited

13/F Hung Kuo Building No
167, Tun Hwa North Road
Taipei 10590, Taiwan
Tel: +886 2 2719 1999
Fax: +886 2 2712 0444

自 2018 年 1 月 1 日起:

杜邦™ Zodiaq® 石英石改名为可丽耐® 石英石

From January 1, 2018:

DuPont™ Zodiaq® is officially rebranded as Corian® Quartz

Find Corian® Quartz
www.corianquartz.cn



微信公众号
Official WeChat Account